

**An Astrological Analysis of Presidential Inaugurations:
Harry S. Truman**

Eric J. Pride, BA

Alphee Gators Research Group

Author Note

AstroInvestigators

With support from Alphee Lavoie and Franco Soulbody

ejpride86@gmail.com

Abstract

Natal and mundane charts are commonly utilized in the assessment of a presidency. However, they may not be able to fully glean a complete picture. This study examines the ability of a presidential inauguration chart to demonstrate themes and uncover events in during an administration's time in office. Particular attention is paid to the bombings of Hiroshima and Nagasaki

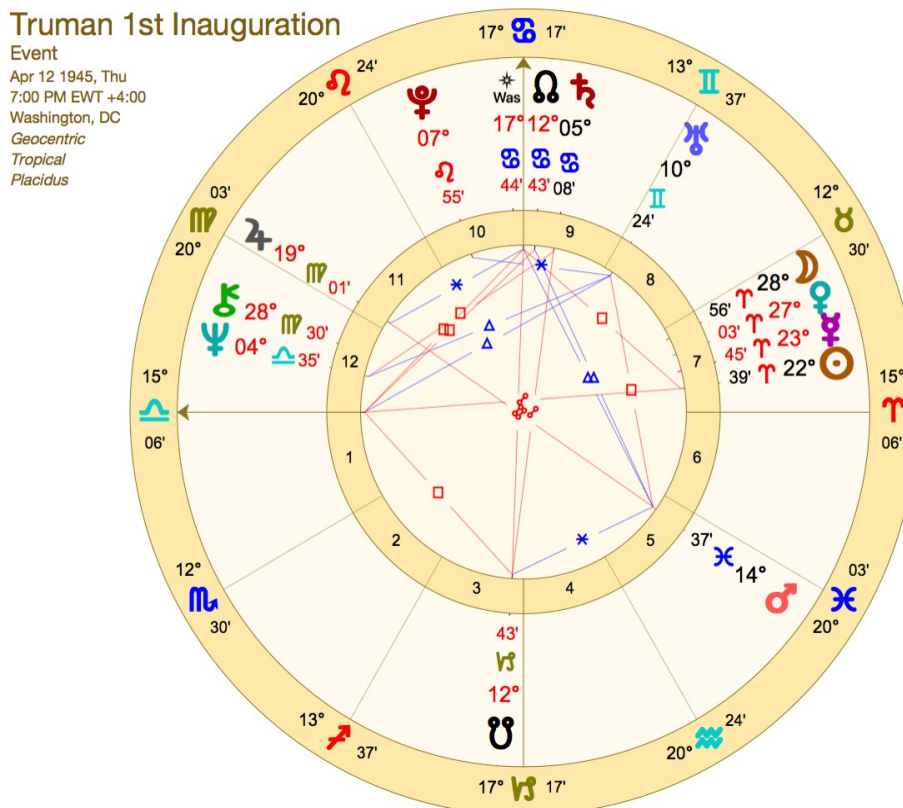
While the a complete analysis of each event during the course of Harry S. Truman's first term in office is beyond the scope of this study, it is the hope of this researcher that it will provide insight into the effective use of inauguration charts.

Keywords: Truman, Hiroshima, Nagasaki, Congress

Method

An inauguration chart for April 12th, 1945 at 7:00:00 PM EWT in Washington DC was erected. The charts for the bombing in Hiroshima and Nagasaki were calculated using the time the bombs dropped in Japan Standard Time. These times were converted to US Eastern War Time and placed in Washington DC. Hiroshima was converted from August 6, 1945 at 8:16:02 AM to August 5, 1845 at 7:16:02 PM. Nagasaki was converted from August 9, 1945 at 11:02:02 AM to August 8, 1945 at 11:02:02 PM.

Analysis



Death of Roosevelt and The Mood of The People

In assessing the first term of Harry S. Truman the first thing that stands out is Pluto in the 10th house of leaders. Truman had an emergency inauguration due to death of then President Franklin D. Roosevelt. The sudden and abrupt change in leadership is illustrated by the sextile from Uranus in the 8th house of death. At the same time the North node of this chart was conjunct the Sun in the US natal chart, which sits at the midpoint between Pluto and Uranus.

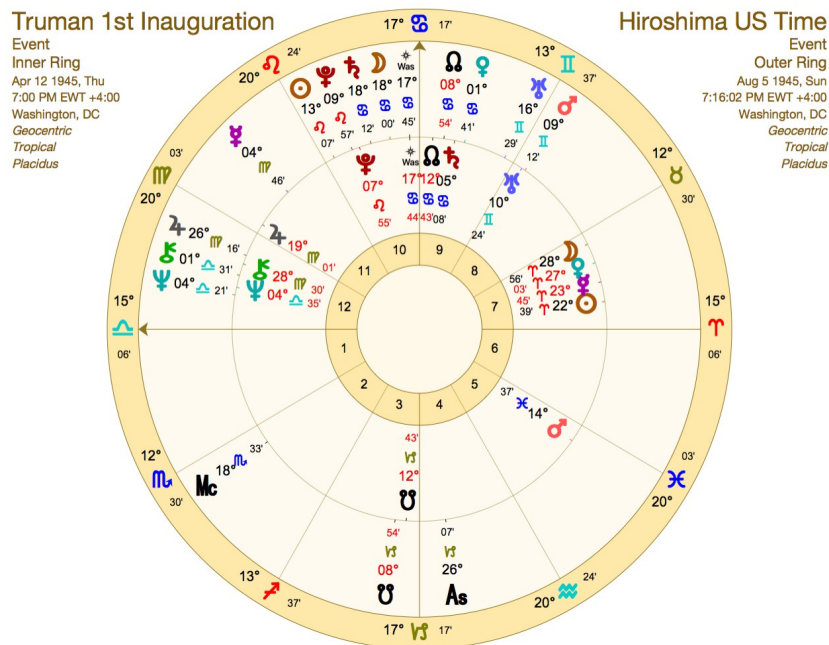
The ascendant gives insight into the general outlook of the public and mood of the country. Libra rises, which is ruled by Venus retrograde in the 7th house of enemies. Here we clearly see how the US population is war-weary and yearning to find balance.

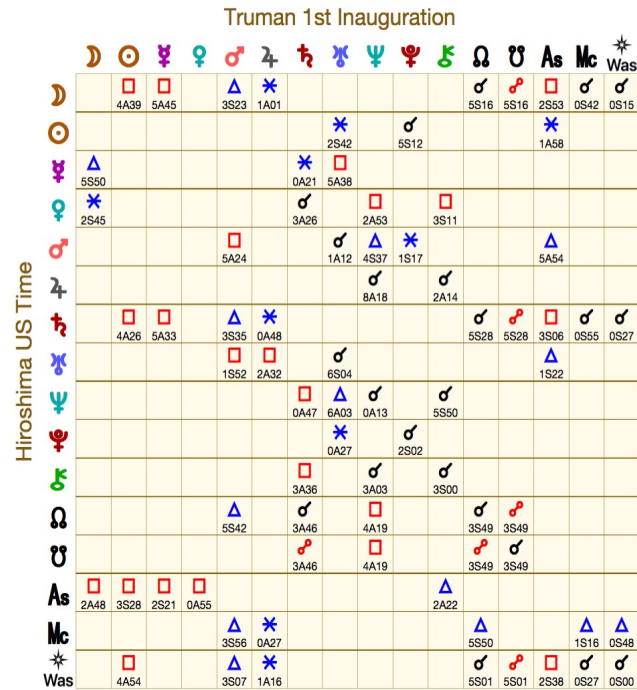
Wasat and The Midheaven

One of the most illuminating placements of this chart is the presence of the fixed star Wasat on the Midheaven within 27 arc minutes. This is the apex of the chart, and shows where our country and president is headed. Vivian Robson write the following of this star, “Of the nature of Saturn. Connected with chemicals, poisons and gas. Violence, malevolence, destructiveness as a first principal.” (Robson, 2005). The violent nature of this star is demonstrated by the the atomic bombs dropped on Hiroshima and Nagasaki Japan. Poison and gases plagued the city for many years given the long term effects of it's Saturnian nature as Robson suggests.

Wasat also sits at the midpoint between the inauguration Moon and Neptune, which sit in the houses of open and hidden enemies. As the Moon is also void of course, it would seem to suggest that these shocking poisons and deaths would either come at the hands of our enemies or by our leadership to them. The stealthy (Neptune) and hidden (Moon VOC) shows how we decided to act first.

Hiroshima





The presence of Wasat is not the only astrological indicator of atomic weapon use within the inauguration chart. The same Pluto and Uranus North node connection that reflected the death of Roosevelt, also points to the potential for sudden disaster and the destruction of relationships. Together it creates a volatile combination.

Leading up to the use of atomic weapons the inauguration chart was activated by a solar eclipse on July 9th at 16 degrees and 57' of Cancer. This tight conjunction to the Midheaven activated both Wasat and the Midheaven. Eclipses almost always trigger events, and in such an auspicious place in the chart, it seemed inevitable.

The moment the bomb was dropped on Hiroshima shows Pluto, Uranus, and Wasat being activated. Wasat was under the influence of Moon/Saturn conjunction. Pluto was being activated by the Sun and Mars. Like Pluto, Uranus was also being triggered by the Sun and Mars. Mercury was also making a square to Uranus, and was slow in motion, as it would station retrograde in 2 days.

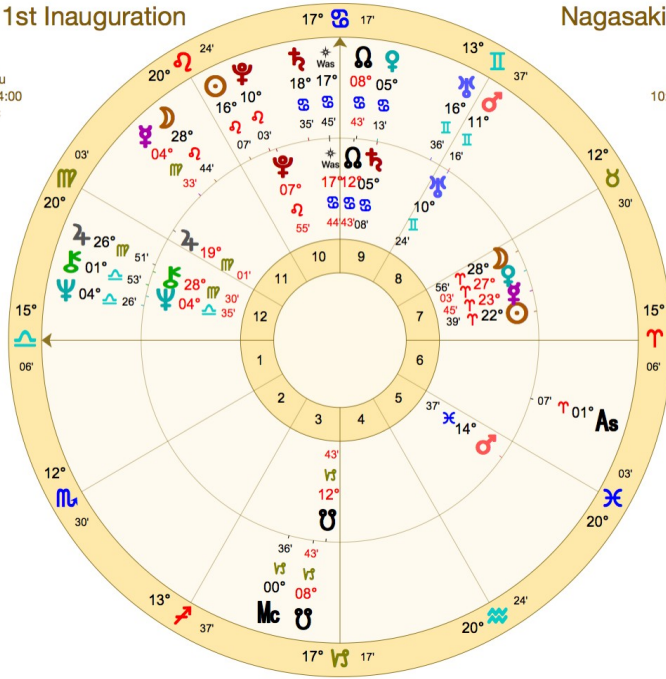
Nagasaki

Truman 1st Inauguration

Event
 Inner Ring
 Apr 12 1945, Thu
 7:00 PM EWT +4:00
 Washington, DC
*Geocentric
 Tropical
 Placidus*

Nagasaki US Time

Event
 Outer Ring
 Aug 8 1945, Wed
 10:02 PM EWT +4:00
 Washington, DC
*Geocentric
 Tropical
 Placidus*



Truman 1st Inauguration

| | Moon | Sun | Venus | Mars | Jupiter | Saturn | Uranus | Neptune | Pluto | As | Mc | Was |
|---------|------|------|-------|------|---------|--------|--------|---------|-------|------|------|------|
| Moon | 0A11 | 6S05 | 4S59 | 1S41 | | | | | | | | |
| Sun | | 6A32 | 7A38 | | | | | | | | 1S00 | |
| Venus | 5A37 | | | | 0S34 | | | | | | | |
| Mars | | | | 3A20 | 0S04 | 0S38 | 7A30 | 7A30 | | | 3A50 | |
| Jupiter | | | | | | 7A43 | 1A39 | | | | | |
| Saturn | 4A04 | 5A10 | 3S58 | 0A26 | | | | 5S51 | 5S51 | 3S28 | 1S18 | 0S50 |
| Uranus | | | 1S59 | 2A25 | 6S11 | | | | | 1S29 | | |
| Neptune | | | | | 0A42 | 5A58 | 0A08 | 3A29 | 5S55 | | | |
| Pluto | | | | | 0A21 | | 2S08 | | | | | |
| As | | | | 3A14 | 2A41 | 3S22 | | | | | | |
| Mc | 1S40 | | 3S33 | | 3A34 | 4A08 | 4S00 | 4S00 | | | | |
| Was | 4A54 | | 3S07 | 1A16 | 4A31 | 3A58 | 2S05 | | 5S01 | 5S01 | 2S38 | 0S27 |

Three days after Hiroshima, the US dropped a second bomb on the Japanese city of Nagasaki. At the time, the chart was still under the influence of the July eclipse. Mercury was now retrograde, but it had just come across the same degree and minute it was at when the first bomb was dropped. In the three days Mercury had moved forward several minutes and then returned. This degree of the zodiac contains no inauguration midpoints, lunations, or fixed stars.

There were no major aspect variations between the charts for the bombing of Hiroshima and Nagasaki on those specific days. An analysis of the transiting Ascendant, Midheaven, and Moon yielded no visible triggers.

Conclusion

The analysis of Truman's inauguration chart showed that general themes can easily be observed, and at times, clear details can be seen. What the analysis did not show was the ability to utilize the chart alone to assess when events would occur outside of larger planetary cycles. Perhaps, if it is used in conjunction with charts of countries and world leaders more detailed information could be uncovered.

References

Ajnaware and Cosmic Apps (2021) Astro Gold- Mac Desktop Version 5.1. [Computer Software]

Seaford Victoria, Australia

Robson, V. (2005). *The fixed stars and constellations in astrology*. Kessinger Pub.

Steinberg, A. (2020, December 22). Harry S. Truman. Encyclopedia Britannica.

<https://www.britannica.com/biography/Harry-S-Truman>